

Corporate
Office

Airport
Clubhouse

Kitchen
Remodel

Football
Complex



Architectural Woodwork Institute

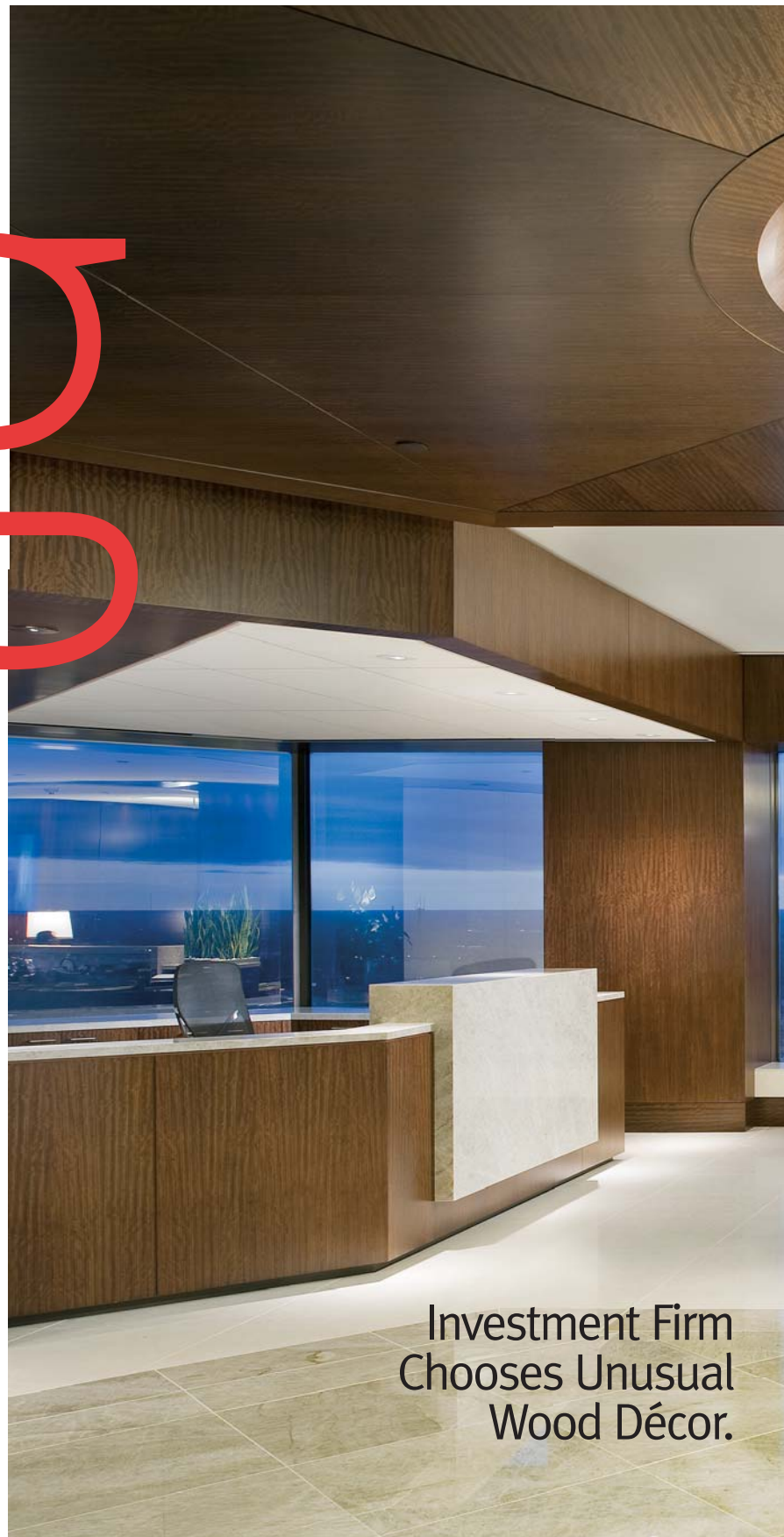
design solutions

Spring 2013 | \$6.25






EIG Global Energy Partners, LLC is a leading institutional investor with a 30-year track record of investing in energy, resources and related infrastructure areas. During its 30-year history, EIG has invested in aggregate over \$14 billion in the sector through 290 projects or companies in 33 countries on six continents. EIG's clients include many of the leading pension plans, insurance companies, sovereign wealth funds, university endowments and other funds. EIG is headquartered in Washington, D.C., with offices in Houston, London, Sydney, Hong Kong, Seoul and Rio de Janeiro.



Investment Firm
Chooses Unusual
Wood Décor.



A view of the total space illustrates how the beautiful paneling gives the offices a professional image of strength and tradition.

Office of Ovankol.





◀ The reception area makes a remarkable statement with its elegant Ovangkol paneling and custom desk.

“ In addition to our quality craftsmanship and on time delivery, we provide personalized service from our team of experienced and responsible professionals. We pride ourselves on meeting even the most difficult construction schedule without sacrificing quality and performance. ”

– **Frank Huschitt III**
President

In a recent relocation and renovation of the company's Houston, Texas, office, the design firm PDR (Planning Design Research) of Houston was commissioned to oversee the design, while the architectural woodwork was supplied by Imperial Woodworking Company, an AWI member firm located in Palatine, Illinois.

The project scope included approximately 16,500 square feet on the 35th floor. The project took almost 12 months from inception to completion.

at a glance

AWI MANUFACTURING
MEMBER:

**Imperial Woodworking
Company**

LOCATION:

Palatine, Illinois

ESTABLISHED:

1963

FACILITY:

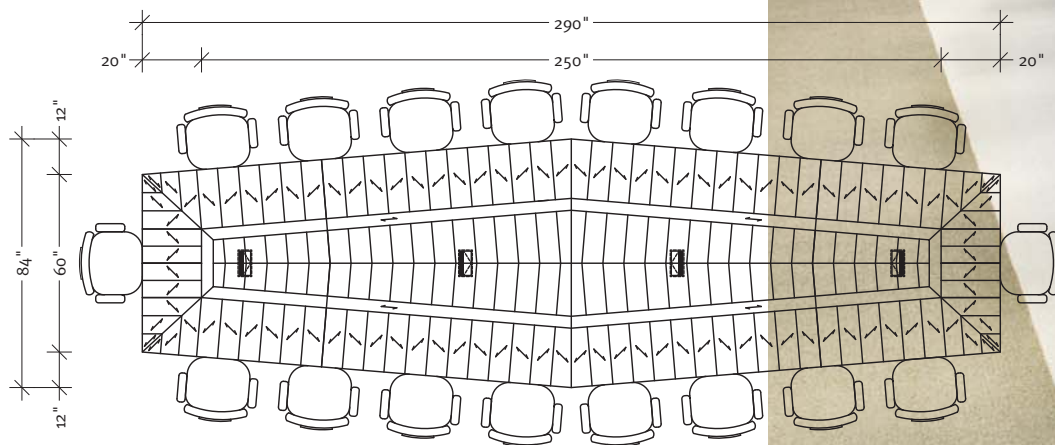
71,000 square feet

Located in the energy capital of the world, EIG's Houston office needed to be transformed into a space that showcases the value and success their services provide. EIG sought to improve their presence from the public corridor and visitor experience, provide better lighting including more natural light, incorporate wider paths for improved circulation, and introduce all new furniture and furnishings while maintaining and enhancing their existing culture.

Design Objectives

Primary design considerations included turning the space into high quality, functional offices that present an image that is successful and professional. Acoustical privacy was necessary for the client experience, and technology and audio/visual capabilities needed to be integrated into the design.

According to Stuart Harris of PDR, "the design team created a more modern approach to the traditional design found in other EIG offices. Constrained by the existing footprint, the entry and reception is positioned to allow employee offices to be grouped together while the visitor-facing areas are located on the other side."



PLAN VIEW
Executive Conference Table



The conference table features a sketch face with an inlay of brass.

The office has generous corridors and clear circulation pathways for employees and visitors. The nature of the work employees perform requires acoustical and visual privacy in offices and meeting rooms.

Offices are arranged to reflect the business dynamic. The arrangement of the exterior offices provides employees with direct and dramatic views of the cityscape below.

Sidelites are tall, narrow and deep to provide visual privacy while allowing natural light to pass through to the interior spaces.

The War Room, a conference room that is multifunctional and used for live meetings, videoconferences, training and working sessions, is centrally located between the executive wing and the coffee bar.

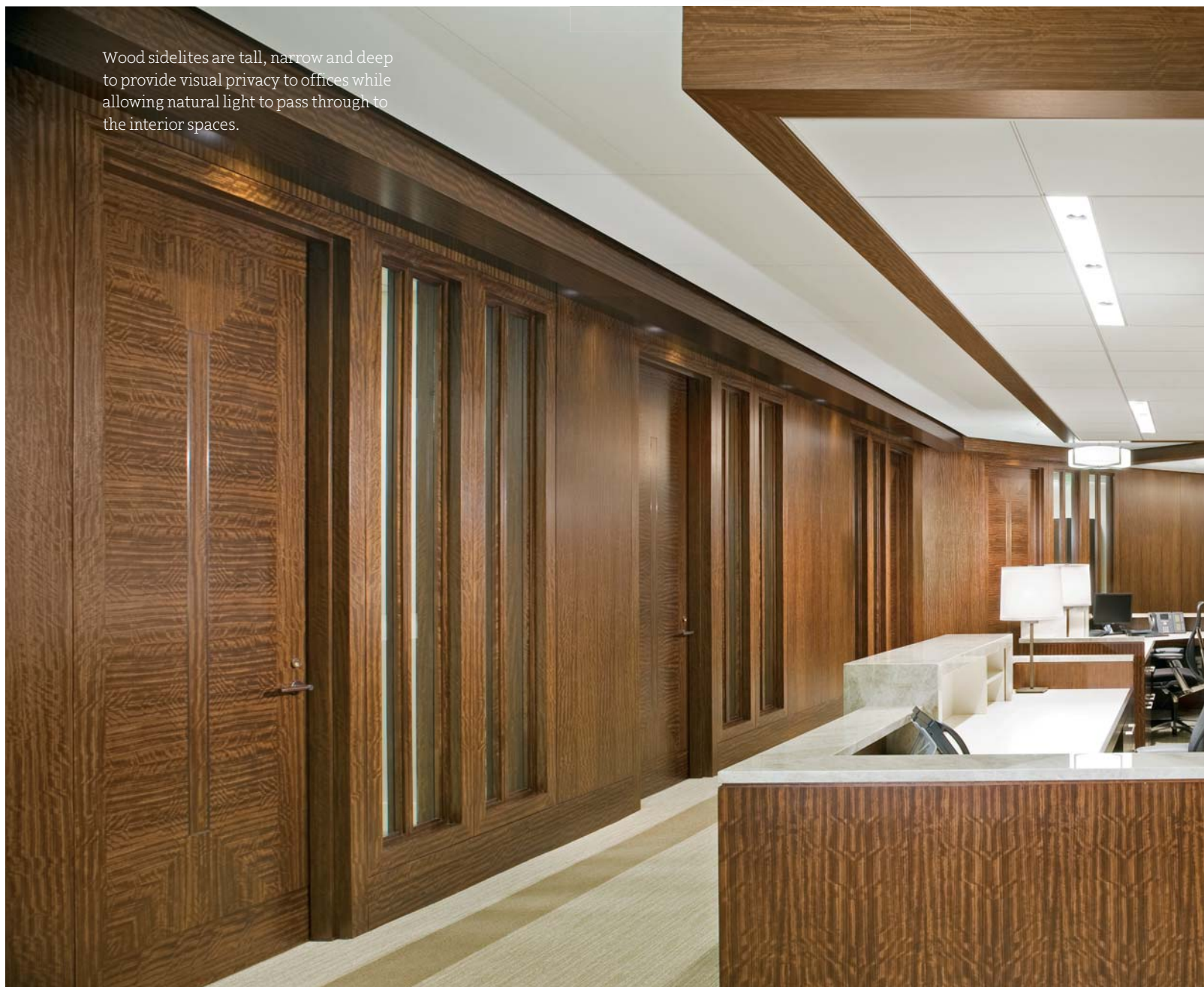


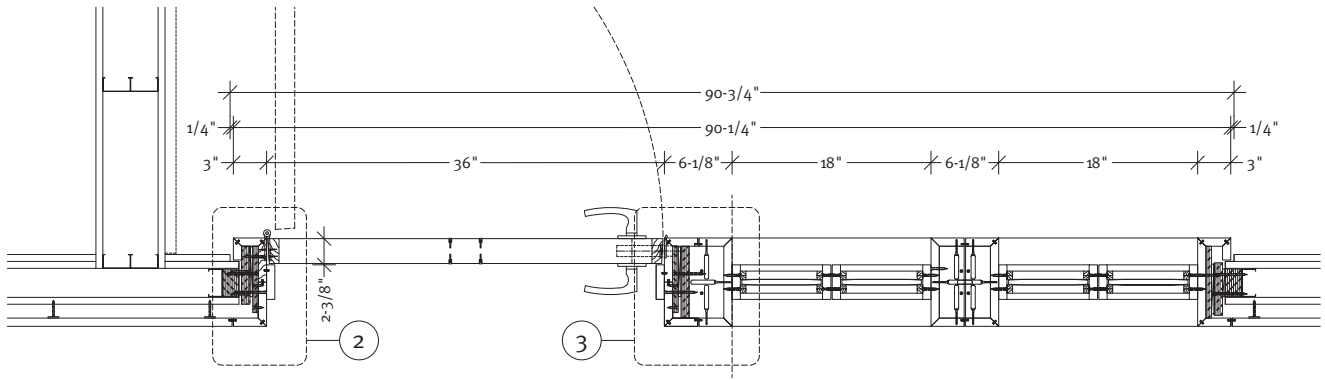
OVANGKOL

Wood, Key Element

“Wood conveys numerous contextual elements important to how we project our professional image, to include strength, tradition, solidity and permanence, among others,” states William Thierbach, executive director of EIG. “Woodwork also conveys warmth and harmony and provides the integral foundation for other

Wood sidelites are tall, narrow and deep to provide visual privacy to offices while allowing natural light to pass through to the interior spaces.





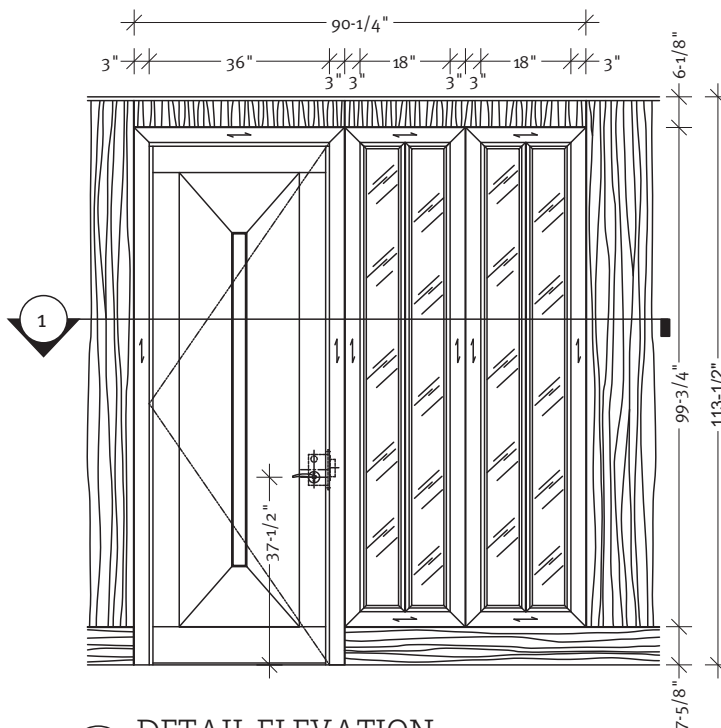
1 PLAN SECTION DETAIL
@ Typical Office Entry

elements, finishes and conditions in the space. Our objectives for using woodwork reflected both professional and aesthetic considerations.”

Ovangkol with a lot of flash (crossfire) was used for the whole project, explains Garrett Spencer of Imperial Woodworking. Imperial fab-

ricated veneer wall paneling, ceiling panels, reception desk, doors and conference tables for the space. “Doors and conference tables both have a sketch face with a brass inlay. Finish was catalyzed medium stain conversion varnish.”

“We took care to select a veneer that suited our corporate aesthetic – one we feel is traditional, yet modern and sophisticated,” says Thierbach. “We believe the Ovangkol log we chose suited that goal ideally. In addition to selecting a veneer with strong character, we also chose a simple, clean design for the woodwork, including a matte finish with a specific level of grain fill. Imperial did an exceptional job securing numerous, high-quality logs from which to choose.”



DETAIL ELEVATION
@ Typ. Office Entry w/ Side Light



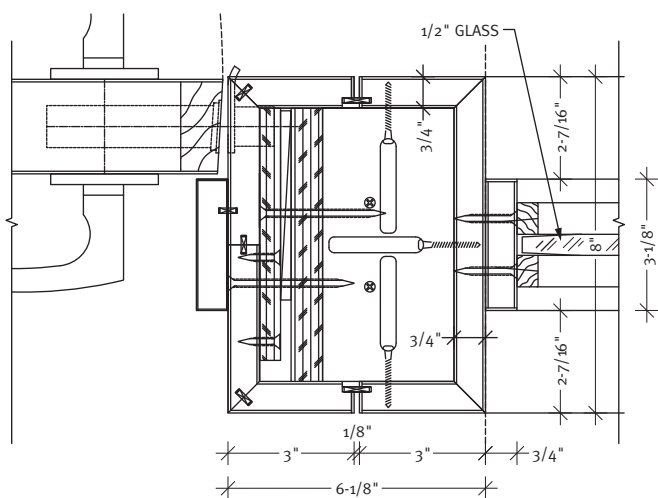
Quality Without Compromise

50
YEARS
1963-2013

We've seen many changes over the last 50 years, but some things still remain the same: Our commitment to and focus on **quality, service** and **craftsmanship**. We'd like to thank our dedicated employees, loyal customers, steadfast business partners, and dependable vendors, without whom we could not have achieved such accomplishments.



IMPERIAL
WOODWORKING COMPANY



3 SECTION DETAIL
@ Jamb, Strike Side

Of Special Note

The doors and conference tables with inlaid metal were the most noteworthy items of the project, says Harris. Also of note were the glass fronts to offices and conference rooms which included veneer and solid stock elements that considered the book-matching rhythm as it moved across the doors. "In all cases, the veneer selection and layup was thoughtfully considered to achieve the best visual appearance."

Without a doubt, says Thierbach, the main conference table gets the favorite vote. "This massive, 20-seat table involved many disciplines with regards to design, engineering, audio visual, fabrication and installation. Everyone worked harmoniously, under severe schedule

constraints, to deliver this showpiece in perfect condition, functioning flawlessly. It was a Herculean undertaking. That said, we truly feel that all of the work in the space is exceptional, with additional special note to the office doors and reception and executive assistant workstation."

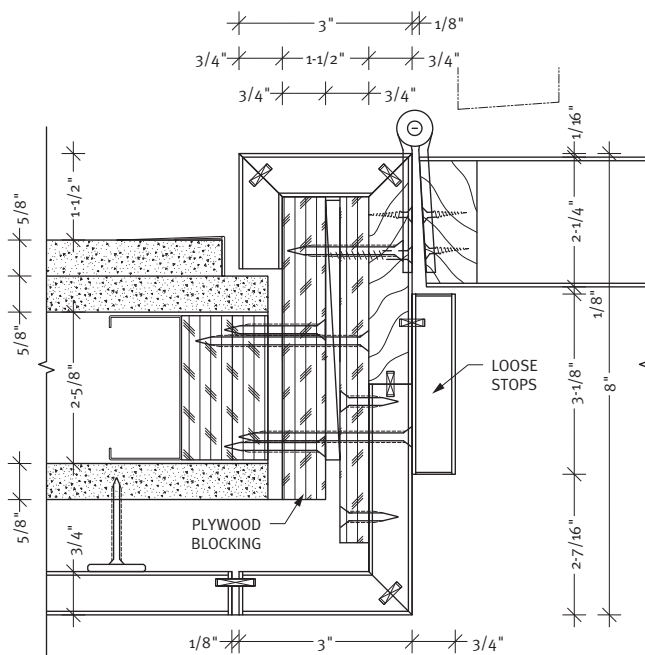
Challenges came at the woodworking firm with the sketch-face doors, conference table and ceiling, reports Spencer. "There were a ton of variables with floor heights in variance of up to two inches throughout the space without a location to change height. The ceiling was locked in and veneer widths required some incredible juggling on sizing to make it all aesthetically pleasing."

Making It Happen

"Our relationship with Imperial Woodworking was collaborative from the outset which was invaluable in producing a job that was right on in terms of quality, budget and schedule," notes Harris. "Imperial produced numerous mock-ups, large and small, samples and drawings to assist us in making the right decisions during design implementation. Imperial took the time to understand our design intent and, during the implementation phase, offered fabrication and design ideas that supported our concept and what was best for the project."

Spencer echoes the sentiment. "There was great continuity in our relationship with PDR. The PDR team was great and we thought that from the very first meeting. We listened to what the client's needs were and we responded perfectly."

"Based on my experience managing several other projects of similar magnitude for our firm, I believe that Imperial Woodworking truly went above and beyond normal course on our project," summarizes Thierbach. "At every step we had significant participation at the most senior levels, ensuring the project stayed on course and was delivered as promised."



2 SECTION DETAIL
@ Jamb, Hinge Side

PROJECT:
**Offices of EIG
Global Partners**
Houston, TX

PROJECT OWNER:
**EIG Global
Partners**
Washington, DC

WOODWORKER:
**Imperial
Woodworking
Company**
Palatine, IL

DESIGNER:
PDR
Houston, TX

GENERAL CONTRACTOR:
HITT Contracting, Inc.
Falls Church, VA

PHOTOGRAPHER:
Mark Scheyer
Houston, TX